

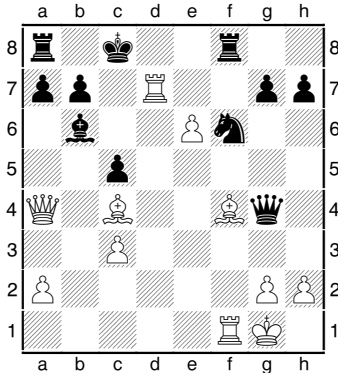
ABQ CHESS



Eddie Wyckoff

SUNDAY PUZZLER

(A) Holy Orders
(Level: Easy)



White to move and mate in 2
Morphy v. Thompson, 1859.

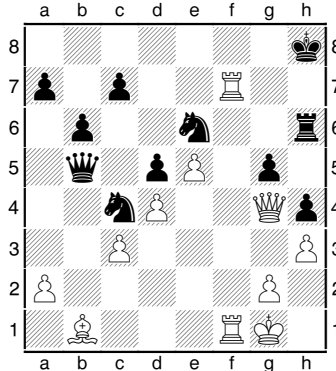
No Queen for Morphy

Paul Morphy, often considered the best American player before Fischer, had a hard time keeping his queen. It is rumored that the love of his life refused to marry him,

because he was a “mere chess player.”

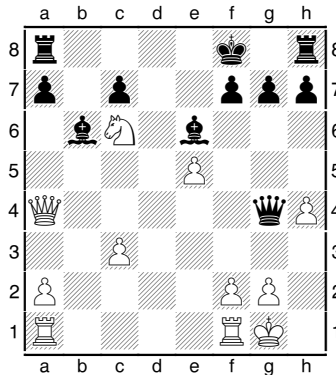
Can you lose your queen like Morphy?

(B) Morphy v. Smyth, 1859



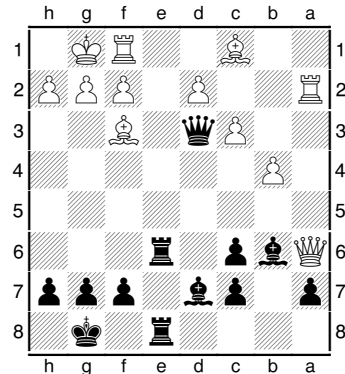
White to move and mate in 4

(C) Morphy v. Bryan, 1859



White to move and win.

(D) Paulsen v. Morphy, 1857



Find Black’s best move.

Solutions

(A) 1.Qc6+! bxc6 2.Ba6#.

(B) 1.Qxe6! Rxe6 2.Rf8+ Kg7 3.R1f7+ Kh6 4.Rh7(or h8)#.

(C) 1.Qa3+ Kg8 (1...Ke8 2.Qe7#) 2.Ne7+ Kf8 3.Ng6+ Kg8 4.Qf8+! Rxf8 5.Ne7#.

(D) 1...Qxf3!! 2.gxf3 Rg6+ 3.Kh1 Bh3 4.Rd1 (4.Qd3 f5 5.Rd1 and White resists some) 4...Bg2+ 5.Kg1 Bxf3+ 6.Kf1 Rg2! (Morphy took longer with 6...Bg2+) 7.Qd3 Rxf2+ 8.Kg1 Rg2+ 9.Kh1 Rg1#.

Click & Move abqchess.com
Password: PaulMorphy

Suggestions? Submissions?

journalchess@gmail.com Learn notation:
abqchess.com/n Events: nmchess.org