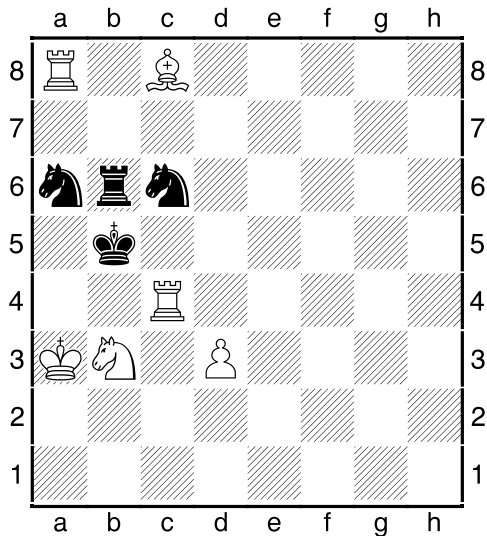


# CHess PUZZLER



**White to move and mate in 3.**

## Model Mate! (Level: Intermediate)

By Eddie Wyckoff

*Schematic.* You may have heard of the pure mate, i.e. in the checkmated king's field, every vacant square is attacked only once, and the losing side's pieces are not attacked (unless necessarily pinned). Today's puzzle is a model mate, i.e. a pure mate where all pieces participate in the mating net.

**Answer:** 1.Rc5+! Nxc5  
2.Ra5+ Nxa5 3.Nd4#.

ABQ Chess Features | [www.abqchess.com](http://www.abqchess.com)