

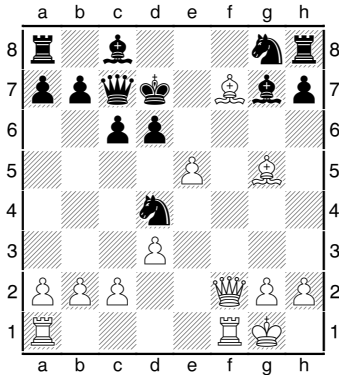
ABQ CHESS



Eddie Wyckoff

SUNDAY PUZZLER

(A) “Not Six Squares Apart”
(Level: Easy)



White to move and mate in 2

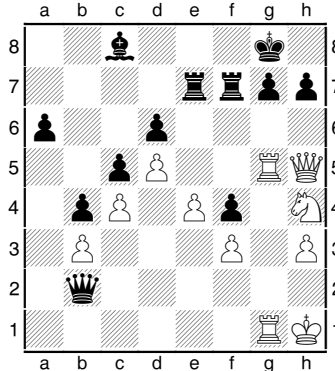
From Schaya Nimzowitsch
(Aron Nimzowitsch’s father)
vs. Neumann, 1899.

Lessons from 1899!

121-year-old puzzles can
teach us valuable lessons
today. For each problem, find
the best continuation.

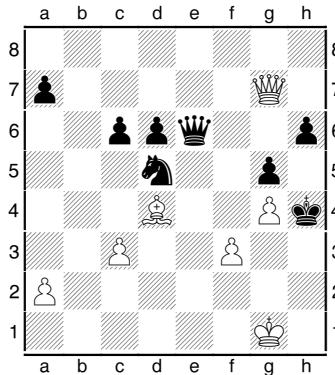
Score to Elo: 1-3, 1200+; 4-6,
1400+; 7-11, 1600+; 12-16,
1800+; 17-18, 2000+.

(B) “Social Distance Fail”
Janowski vs. Schlechter, 1899



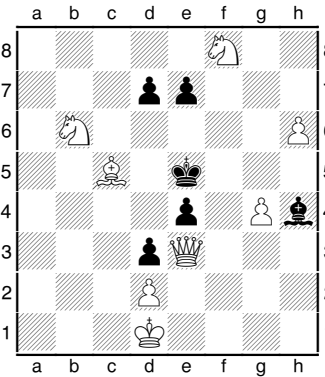
White to move.

(C) “Death by Quarantine”
Schlechter vs. Meitner, 1899



White to move.

(D) “Shelter-In-Place Lifted”
Womanhood, May 1899



White to move and mate in 2

Solutions

A. 3 pts: 1.Qf5+! (2 pts) 1. ...
Nxf5 2.e6# (1 pt).

B. 4 pts: 1.Qxh7+! Kxh7
2.Rh5+ Kg8 3.Ng6, where
mate cannot be stopped.

C. 5 pts: 1.Qxh6+! (3 pts). If
1. ... Qxh6 2.Kh2!, where
Bf2# can’t be stopped (2 pts).

D. 6 pts: 1.Kc1!! (first 3 pts),
now Black must move, but
any move allows checkmate.
This is an instance of
zugzwang (analysis, 3 pts).

Suggestions? Submissions?

journalchess@gmail.com Learn notation:
learnchess.info/n Events: nmchess.org

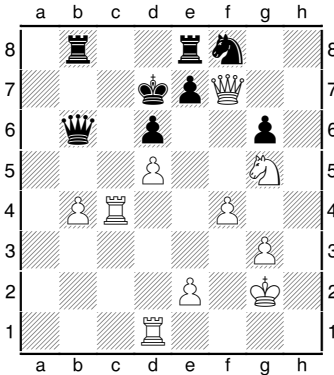
ABQ CHESS



Eddie Wyckoff

SUNDAY PUZZLER

Loved and Lost
(Level: Easy)



White to move and mate in 3

Richard Bates vs. Mark
Hebden, Caplin Hastings
Congress 2019.

Hastings Congress

The Hastings Chess
Congress is being held Dec.
28 – Jan. 5. Following is a
game from this event:

Stoyanov vs. Edouard

- | | |
|-------------|----------------|
| 1.Nf3 c5 | 2.c4 Nc6 |
| 3.d4 cxd4 | 4.Nxd4 Nf6 |
| 5.Nc3 e6 | 6.e4 Qc7 |
| 7.Be3 Bb4 | 8.Nxc6 Qxc6 |
| 9.f3 d5 | 10.exd5 exd5 |
| 11.Qd4 0–0 | 12.0–0–0 Be6 |
| 13.c5 Bxc3 | 14.Qxc3 b6 |
| 15.Kb1 d4 | 16.Bxd4 Bxa2+ |
| 17.Ka1 Qa4 | 18.Bb5 Qxb5 |
| 19.Kxa2 Nd5 | 20.Qb3 Nb4+ |
| 21.Kb1 bxc5 | 22.Bc3 a5 |
| 23.Bxb4 c4 | 24.Qe3 axb4 |
| 25.Rd4 Qa4 | 26.Rhd1 c3 0–1 |

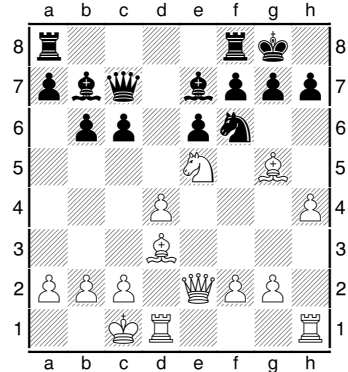
Solitaire Chess

Can you attack like Bobby
Fischer with the White
pieces? Moves you guess
begin after the diagram; **use a
piece of paper to cover the
remaining moves as you go.**

*Score to Elo: 20-25, 2000+;
15-19, 1800-1999; 10-14,
1600-1799; 5-9, 1400-1599;
<5, <1400.*

Fischer vs. Kurz, 1970 Simul

- | | | |
|--------------|------------|------------|
| 1.e4 e6 | 2.d4 d5 | 3.Nc3 dxe4 |
| 4.Nxe4 Nd7 | 5.Nf3 Nxf6 | 6.Bg5 Be7 |
| 7.Nxf6+ Nxf6 | 8.Bd3 0–0 | 9.Qe2 c6 |
| 10.0–0–0 | Qc7 | 11.h4 b6 |
| 12.Ne5 Bb7 | (D) | |



You Start Here!

- | | |
|---------------------------------|---------------|
| 13.Rh3 (2 pts) | 13. ... Rad8 |
| 14.Rg3 (3 pts) | 14. ... Kh8 |
| 15.Bxf6 (4 pts) | 15. ... Bxf6 |
| 16.Qh5 (5 pts) | 16. ... h6 |
| 17.Rg6!! (6 pts; if 16. ... g6, | 17. ... fxc6) |
| 17.Bxc6! (+3 pts) | |

18.Qxc6 (2 pts) *resigns*

Puzzler Solution: 1.Qe6+!
Nxe6 2.dxe6+ Kd8 3.Nf7#.

Suggestions? Submissions?
journalchess@gmail.com Learn
notation: learnchess.info/n Events:
nmchess.org

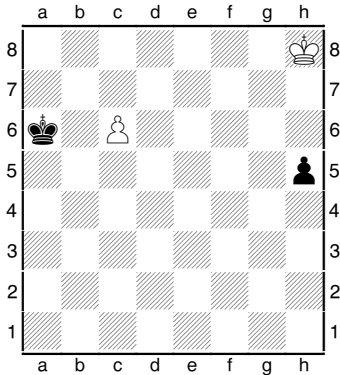
ABQ CHESS



Eddie Wyckoff

SUNDAY PUZZLER

A. Study by Richard _____.
(Level: Intermediate)



White to move (draws/loses)

Composed in 1921. See the solution for composer name.

Local note

*** Springtime in ABQ! ***

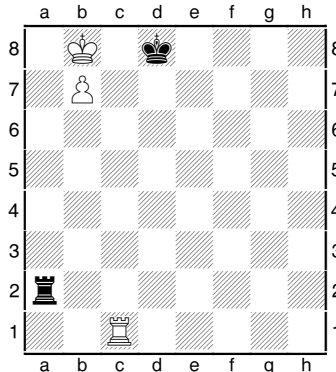
Held March 2-3 at the Albuquerque Institute for Mathematics and Science. More info at: nmchess.org

Ending trivia!

Name= 1 pt.; Solution= 2 pts.

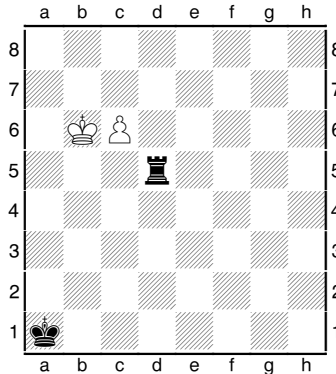
Score to Elo: 1-4, 1400+; 5-8, 1600+; 9-11, 1800+; 12, 2000+.

B. Luis Ramirez de _____.



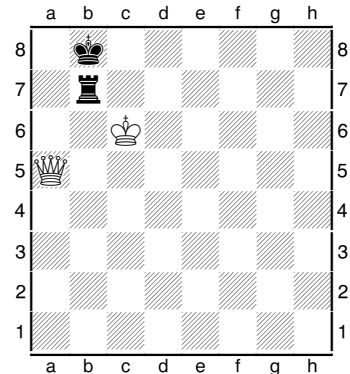
White to move (wins/draws)

C. _____ Position; don't forget the double "a"s!



White to move (wins/draws)

D. _____, a popular name!



White to move (wins/draws)

Solutions

A. By Réti, draws: 1.Kg7! h4 2.Kf6 Kb6 3.Ke5!, White catches the pawn or promotes.

B. Lucena (Position): Build a bridge to win: 1.Rd1+ Ke7 2.Rd4! Ra1, Kc7-b6-c6-b5.

C. Saavedra Position: 1.c7 Rd6+ 2.Kb5 Rd5+ 3.Kb4 Rd4+ 4.Kb3 Rd3+ 5.Kc2! Rd4! 6.c8=R! (6.c8=Q?? Rc4+!) 6. ... Ra4 7.Kb3 1-0.

D. Philidor (Position): e.g. 1.Qe5+ Ka7 2.Qa1+ Kb8 3.Qa5 zugzwang! 1-0.

Suggestions? Submissions?
journalchess@gmail.com Learn notation: learnchess.info/n Events: nmchess.org

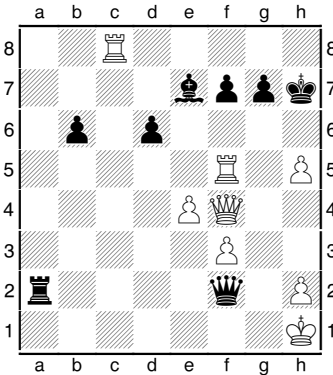
ABQ CHESS



Eddie Wyckoff

SUNDAY PUZZLER

1. Magnum Opus (Level 3)



White to move and mate in 2

Hint: final game from a recent World Championship (game ID in solutions).

Local notes

The Tranquility Club is holding single G/90 +5 rounds for three Fridays (Jan. 12, 19, 26), 2:15 at Erna Fergusson.

More info: nmchess.org

Name that Game II!

Do you know your classic games? Here I present a few. Hopefully one is new to you! *Players listed in "Solutions."*

2. Not Just Game of the Year

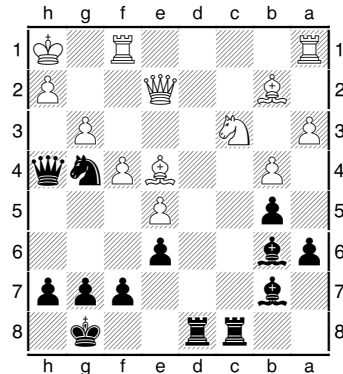
- | | |
|--------------|---------------|
| 1.Nf3 Nf6 | 2.c4 g6 |
| 3.Nc3 Bg7 | 4.d4 0-0 |
| 5.Bf4 d5 | 6.Qb3 dxc4 |
| 7.Qxc4 c6 | 8.e4 Nbd7 |
| 9.Rd1 Nb6 | 10.Qc5 Bg4 |
| 11.Bg5 Na4 | 12.Qa3 Nxc3 |
| 13.bxc3 Nxe4 | 14.Bxe7 Qb6 |
| 15.Bc4 Nxc3 | 16.Bc5 Rfe8+ |
| 17.Kf1 Be6 | 18.Bxb6 Bxc4+ |
| 19.Kg1 Ne2+ | 20.Kf1 Nxd4+ |
| 21.Kg1 Ne2+ | 22.Kf1 Nc3+ |
| 23.Kg1 axb6 | 24.Qb4 Ra4 |
| 25.Qxb6 Nxd1 | (Black won) |

3. It's Not Deciduous...

- | | |
|--------------|---------------|
| 1.e4 e5 | 2.Nf3 Nc6 |
| 3.Bc4 Bc5 | 4.b4 Bxb4 |
| 5.c3 Ba5 | 6.d4 exd4 |
| 7.0-0 d3 | 8.Qb3 Qf6 |
| 9.e5 Qg6 | 10.Re1 Nge7 |
| 11.Ba3 b5 | 12.Qxb5 Rb8 |
| 13.Qa4 Bb6 | 14.Nbd2 Bb7 |
| 15.Ne4 Qf5 | 16.Bxd3 Qh5 |
| 17.Nf6+ gxf6 | 18.exf6 Rg8 |
| 19.Rad1 Qxf3 | 20.Rxe7+ Nxe7 |

W. mates in 4; see solutions.

4. This One's a Ruby



What is Black's best move?

22. ... Rxc3! 23.gxh4 Rd2!
 24.Qxd2 Bxe4+ 25.Qg2 Rh3
W. resigns

Solutions: *Puzzler:* 1.Qh6+!

(gxh6, Rxf7#; Kxh6, Rh8#).

1. Carlsen vs. Karjakin, 2016
2. "Game of the Century" Byrne vs. Fischer, 1956
3. "Evergreen Game" Anderssen vs. Dufresne, 1852

(21.Qxd7+! Kxd7 22.Bf5+ Ke8 23.Bd7+ Kf8 24.Bxe7#)

4. "Rubinstein's Immortal" Rtlewi vs. Rubinstein, 1907

Correct ID # to elo: 1, 1400; 2, 1600; 3, 1800; 4, 2000+.

Suggestions? Submissions?

journalchess@gmail.com Learn notation: learnchess.info/n Events: nmchess.org

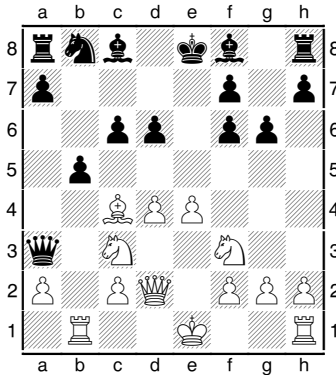
ABQ CHESS



Eddie Wyckoff

SUNDAY PUZZLER

Tear Down this Wall (Level 3)



Find White's best move.

From E. Wyckoff vs. Brian Wall, NM Open '17. Can you find the chance I missed?

NM Open 2017

Fifty-four players met last weekend to compete in the New Mexico Open.

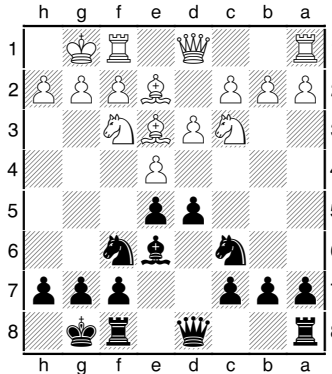
NM Josh Bloomer of Colorado won the event.

Kudos to Jesse Vicario of Las Cruces, who managed an upset draw against Josh!

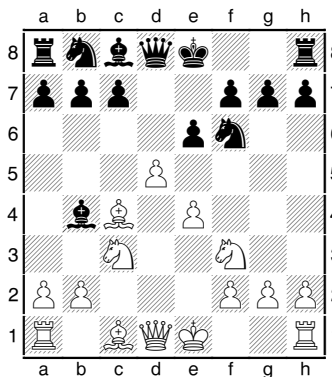
Forks reigned supreme at this event, so I present:

Find the Fork Frenzy!

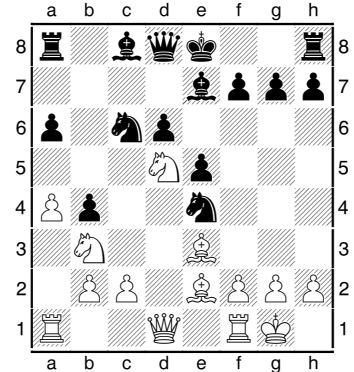
Note: may require a setup move; color at bottom to play.



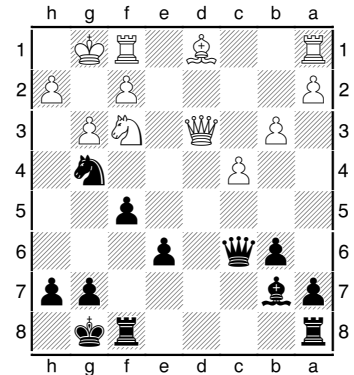
(A) L. Ryan vs. N. Hays



(B) J. Schrader vs. J. Helwick



(C) A. Sandoval vs. J. Wang



(D) Abdalghaffar vs. Wyckoff

Solutions: *Puzzler:* 1.Nxb5!

(if 1. ... cxb5 2.Bd5!)

Forks: (A) 1. ... d4, (B)

1.Qa4+, (C) 1.Bb6 and

2.Nc7+, (D) 1. ... Ne5

Suggestions? Submissions?

journalchess@gmail.com Learn notation:

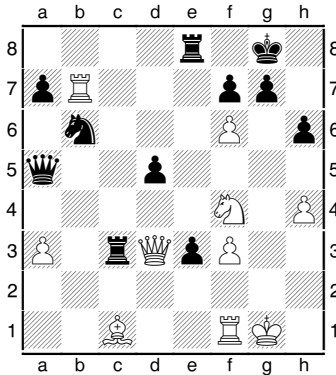
learnchess.info/n Events: nmchess.org

ABQ CHESS



Eddie Wyckoff

SUNDAY PUZZLER Brains and Bron (Level 3)



White to move and mate in 3

From David Bronstein vs.
Efim Geller, USSR
Championship 1961.

Local notes

The Tranquility Chess Club
is holding another Doubles
Open, Nov. 18 at the Special
Collections Public Library!
2 rounds, G/90+5, \$10 EF.

More info: nmchess.org

Name that Game!

Do you know your classic
games? Here I present a few.
Hopefully one is new to you!
Players listed in "Solutions."

1. Roman Candles

- | | |
|-----------|-------------|
| 1.e4 b6 | 2.d4 Bb7 |
| 3.Bd3 f5 | 4.exf5 Bxg2 |
| 5.Qh5+ g6 | 6.fxg6 Nf6 |

W. mates in 2; see solutions

2. Immortal Draw

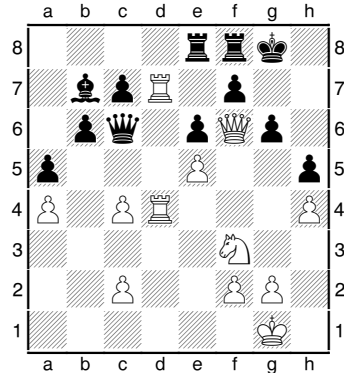
- | | |
|-------------|--------------|
| 1.e4 e5 | 2.Nc3 Bc5 |
| 3.Na4 Bxf2+ | 4.Kxf2 Qh4+ |
| 5.Ke3 Qf4+ | 6.Kd3 d5 |
| 7.Kc3 Qxe4 | 8.Kb3 Na6 |
| 9.a3 Qxa4+ | 10.Kxa4 Nc5+ |
| 11.Kb4 a5+ | 12.Kxc5 Ne7 |
| 13.Bb5+ Kd8 | 14.Bc6 b6+ |
| 15.Kb5 Nxc6 | 16.Kxc6 Bb7+ |
| 17.Kb5 Ba6+ | 18.Kc6 Bb7+ |

Draw agreed

3. Fishing with Baited Rook

- | | |
|------------|--------------|
| 1.e4 g6 | 2.d4 Bg7 |
| 3.Nc3 d6 | 4.f4 Nf6 |
| 5.Nf3 O-O | 6.Bd3 Bg4 |
| 7.h3 Bxf3 | 8.Qxf3 Nc6 |
| 9.Be3 e5 | 10.dxe5 dxe5 |
| 11.f5 gxf5 | 12.Qxf5 Nd4 |
| 13.Qf2 Ne8 | 14.O-O Nd6 |
| 15.Qg3 Kh8 | 16.Qg4 c6 |

- | | |
|------------------------|--------------|
| 17.Qh5 Qe8 | 18.Bxd4 exd4 |
| 19.Rf6 Kg8 | 20.e5 h6 |
| 21. Ne2 <i>resigns</i> | |
- 4.A Short Stroll



White to move

- | | |
|-------------|------------------------|
| 31.Kh2! Rc8 | 32.Kg3! Rce8 |
| 33.Kf4! Bc8 | 34.Kg5! <i>resigns</i> |

Solutions: *Puzzler:* 1.Qg6!
fxg6 2.Rxg7+, and 3.Ng6#.

Player names:

- Greco v. NN, Rome, 1619
Fini: 7.gxh7+ NxQ 8.BxN#
 - Hamppe v. Meitner, 1872
 - Fischer v. Benko, 1963
 - Short v. Timman, 1991
- > Correct game ID/elo
correlation: 1, 1400; 2, 1600;
3, 1800; 4, 2000+

Suggestions? Submissions?

journalchess@gmail.com Learn notation:
learnchess.info/n Events: nmchess.org